

clever – creative – sustainable – relevant



utz EUROTEC

utzgroup.com



EUROTEC — Stacking containers for use in automated storage and retrieval

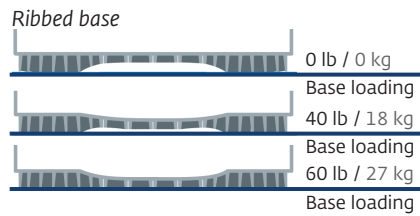
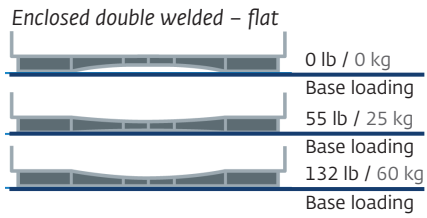
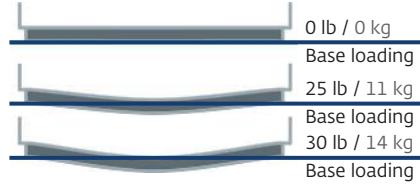
The EUROTEC is a high performance straight wall container designed with automated systems, conveyance, handling and storage in mind. The EUROTEC offers a variety of features to ensure reliable, repeatable and durable performance within your system. A patented integrated divider solution accommodates the need for multiple sku's in one tote. A variety of footprints, heights and bottom construction ensure an optimal solution depending on product storage needs.

Features

- Designed for automation and conveyor systems
- Reinforced base variants
- Enclosed double base
- Enclosed double corners
- Vertical grip hook
- Ergonomic handles
- Fields for hot stamp, labels, label pockets, barcodes and RFID tags
- Filling weight up to 110 lbs for ribbed base and 154 lbs for enclosed double base
- Optional drainage holes
- Patented interlocking dividers

Benefits

- Flawless performance on automated systems
- Wide range of interfaces for robotic handling or automatic conveyors
- Non-existing floor flexing
- Optimum base stability
- A variety of footprints, heights and bottom construction ensure an optimal solution specific to your product needs.



Typical base deflection — these do not affect the capacity of containers; it only shows the deflection of the bottom.

EUROTEC Shipping data

Part Number	Description	#/layer	#/pallet 1200x800	#/truck 53' trailer
55-6040-220	600 x 400 x 220 mm	5	50	1500
55-6040-280	600 x 400 x 280 mm	5	50	1200
55-6040-325	600 x 400 x 325 mm	5	35	1050
55-6545-325	600 x 450 x 325 mm	4	28	840



600 x 400 x 220 mm

23.6 x 15.7 x 8.7 in

Part number	Base	Interior	Walls	Handles	Usable height	Inner Dimensions	Part Weight	Capacity
55-6040-220-0	flat	divider	smooth	shell short & long sides	205.5 mm 8.1 in	554 x 354 x 217.5 mm 21.81 x 13.94 x 8.56 in	1.8 kg 4.0 lbs	42.7 liters 1.5 ft ³
55-6040-220-1	ribbed	divider	smooth	shell short & long sides	185.5 mm 7.3 in	565 x 365 x 297.5 mm 22.24 x 14.37 x 7.78 in	2.2 kg 4.9 lbs	40.7 liters 1.4 ft ³
55-6040-220-2	double welded	divider	smooth	shell short & long sides	191.5 mm 7.5 in	565 x 365 x 297.5 mm 22.24 x 14.37 x 7.78 in	2.5 kg 5.5 lbs	42.0 liters 1.5 ft ³
55-6040-220-12	flat	divider	smooth	shell short & long sides	191.5 mm 7.5 in	565 x 365 x 297.5 mm 22.24 x 14.37 x 7.78 in	2.5 kg 5.5 lbs	42.0 liters 1.5 ft ³
55-6040-220-20	ribbed	divider	smooth	slot short / shell long sides	205.5 mm 8.1 in	554 x 354 x 217.5 mm 21.81 x 13.94 x 8.56 in	1.8 kg 4.0 lbs	42.7 liters 1.5 ft ³
55-6040-220-21	double welded	divider	smooth	slot short / shell long sides	185.5 mm 7.3 in	565 x 365 x 297.5 mm 22.24 x 14.37 x 7.78 in	2.2 kg 4.9 lbs	40.7 liters 1.4 ft ³
55-6040-220-22	double welded	divider	smooth	slot short / shell long sides	191.5 mm 7.5 in	565 x 365 x 297.5 mm 22.24 x 14.37 x 7.78 in	2.5 kg 5.5 lbs	42.0 liters 1.5 ft ³



600 x 400 x 280 mm

23.6 x 15.7 x 11 in

Part number	Base	Interior	Walls	Handles	Usable height	Inner Dimensions	Part Weight	Capacity
55-6040-280-0	flat	divider	smooth	shell short & long sides	265.5 mm 10.45 in	554 x 354 x 277.5 mm 21.81 x 13.94 x 10.93 in	2.1 kg 4.6 lbs	54.4 liters 1.9 ft ³
55-6040-280-1	ribbed	divider	smooth	shell short & long sides	145.5 mm 9.67 in	565 x 365 x 257.5 mm 22.24 x 14.37 x 10.14 in	2.7 kg 6.0 lbs	53.1 liters 1.9 ft ³
55-6040-280-2	double welded	divider	smooth	shell short & long sides	251.5 mm 9.9 in	565 x 365 x 263.5 mm 22.24 x 14.37 x 10.37 in	2.8 kg 6.2 lbs	54.3 liters 1.9 ft ³



600 x 400 x 325 mm

23.6 x 15.7 x 12.8 in

Part number	Base	Interior	Walls	Handles	Usable height	Inner Dimensions	Part Weight	Capacity
55-6040-325-0	flat	divider	smooth	shell short & long sides	310 mm 12.2 in	554 x 354 x 322 mm 21.81 x 13.94 x 12.68 in	2.5 kg 5.5 lbs	63.1 liters 2.2 ft ³
55-6040-325-1	ribbed	divider	smooth	shell short & long sides	290.5 mm 11.44 in	565 x 365 x 302.5 mm 22.24 x 14.37 x 11.91 in	2.9 kg 6.4 lbs	62.4 liters 2.2 ft ³
55-6040-325-2	double welded	divider	smooth	shell short & long sides	196.5 mm 11.67 in	565 x 365 x 308.5 mm 22.24 x 14.37 x 12.15 in	3.0 kg 6.6 lbs	63.6 liters 2.2 ft ³
55-6040-325-50	flat	divider	slotted	shell short & long sides	310 mm 12.2 in	554 x 354 x 322 mm 21.81 x 13.94 x 12.68 in	2.2 kg 4.9 lbs	63.1 liters 2.2 ft ³
55-6040-325-51	ribbed	divider	slotted	shell short & long sides	290.5 mm 11.44 in	565 x 365 x 302.5 mm 22.24 x 14.37 x 11.91 in	2.6 kg 5.7 lbs	62.4 liters 2.2 ft ³
55-6040-325-52	double welded	divider	slotted	shell short & long sides	296.5 mm 11.67 in	565 x 365 x 308.5 mm 22.24 x 14.37 x 12.15 in	2.7 kg 6.0 lbs	63.6 liters 2.2 ft ³



650 x 450 x 325 mm

25.6 x 17.7 x 12.8 in

Part number	Base	Interior	Walls	Handles	Usable height	Inner Dimensions	Part Weight	Capacity
55-6545-325-0	flat	divider	smooth	shell short & long sides	310 mm 12.2 in	604 x 404 x 322 mm 23.78 x 15.9 x 12.68 in	2.6 kg 5.7 lbs	78.6 liters 2.8 ft ³
55-6545-325-1	ribbed	divider	smooth	shell short & long sides	290.5 mm 11.44 in	615 x 415 x 302.5 mm 24.21 x 16.34 x 11.91 in	3.3 kg 7.3 lbs	77.2 liters 2.7 ft ³
55-6545-325-2	double welded	divider	smooth	shell short & long sides	296.5 mm 11.67 in	615 x 415 x 308.5 mm 24.21 x 16.34 x 12.15 in	3.5 kg 7.7 lbs	78.7 liters 2.8 ft ³

Dividers



Utz patented interlocking divider design is made of rigid ABS injection molded material. Short and long dividers are available in different heights.

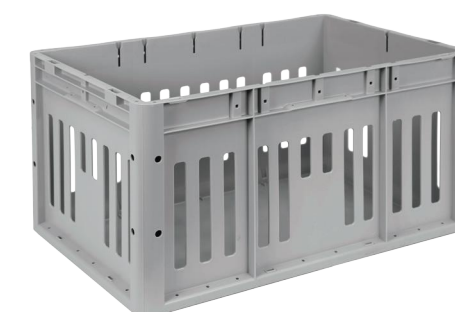
Wall options



Smooth interior walls
Solid smooth interior walls and bottom allow for easy cleaning and avoid loss of small parts.



Drainage holes
28 drainage hole standard. Other drainage configurations are available upon request.



Slotted walls
Slotted walls accommodate situations where consistent air flow is critical.

**EUROTEC Brochure
2017 / 2018**



utzgroup.com

Georg Utz, Inc.
14000 N 250 W, Edinburgh, IN 46124
Phone 812 526 2240 Fax 812 526 2428
info.us@utzgroup.com

