

clever – creative – sustainable – relevant

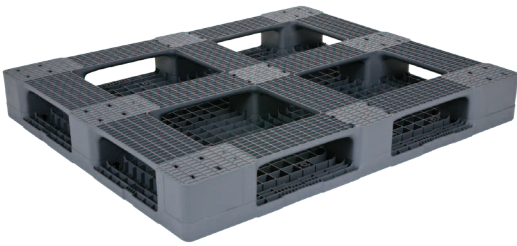



utz UPAL-A

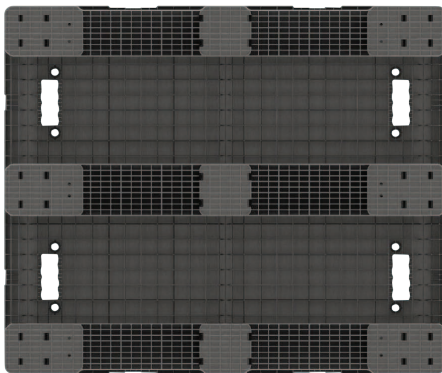
Designed for automated systems

The new UPAL-A is compatible with automated systems without the need of expensive pallet support boards or slave pallets. The pallet has the versatility to be used in both 40" and 48" orientations.

The UPAL-A's durable design extends product life reducing the total cost of ownership. It improves your return on investment and is 100% recyclable.



- Available in 6 runner and 3 runner style
- Design of the runner's under surface provides optimal performance on belt conveyors, rollers and wheel conveyance.
- Reinforced and non-reinforced options
- Capable to reinforce for racking in both the 40" and 48" orientation
- Smooth solid deck available with and without safety edges
- Ergonomic handle design
- Optional anti-slip grommets
- Double wall foot construction for superior durability
- 4 way entry fork truck / 2 way hand truck entry
- Fields for hot stamp, labels, label placard, mold in logo
- Cleanable and hygienic design
- Robust features for strapping / banding of product
- Compatible with Utz RAKO straight wall containers and space saving containers
- Available in recycled and FDA approved materials
- Available in ESD material 



UPAL-A 4840 • 48 x 40 x 6 in 1200 x 1000 x 152 mm

Part number	Model	Runners	Top deck	Weight
33-4840-1	non-reinforced	6 runners	smooth, solid	43 lb / 19.6 kg
33-4840-100	reinforced	6 runners	smooth, solid	48 lb / 22.1 kg
33-4840-2	non-reinforced	3 runners	smooth, solid	39 lb / 17.8 kg
33-4840-200	reinforced	3 runners	smooth, solid	44 lb / 20.3 kg
Load capacity		reinforced		
static		30000 lb / 13607 kg		
dynamic		6000 lb / 2722 kg		
in racking		2500 lb / 1134 kg		

*Note: Racking weights are based on uniform loads.
Load capacity information is valid for area loading at 73.4° F.
We recommend testing the product in specifically intended environment.*

