

clever – creative – sustainable – smart



Foam inserts

Service Box insert set (Handy/Dental)

to fit
POOLBOX 11, Order no. 39-2032-120-100



Order no.: 89-6-0257
Design: welded frame, parts for floor and lid
Material: frame: PE Ethafoam 220
floor and lid parts: PUR RG22, dimple-finish, profile 1:2, fine
Dimensions: frame: thickness 10 mm/height 85 mm
floor and lid parts: 260 x 140 x 40 mm
Equipment: rear coated with self-adhesive film
Colour: anthracite

Order no.: 36-56001
Design: complete set (box and foam)

Service Box insert set (small appliances)

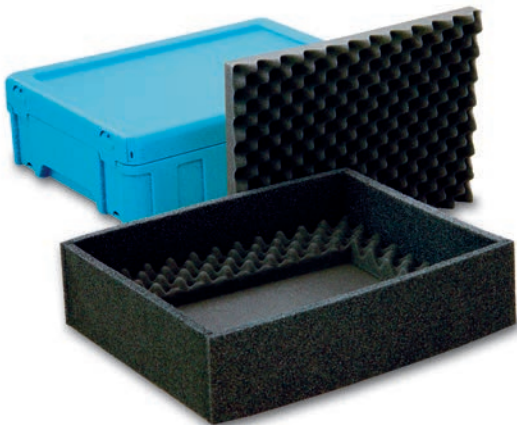
to fit
POOLBOX 14, Order no. 39-2032-170-100



Order no.: 89-6-0256
Design: welded frame, parts for floor and lid
Material: frame: PE Ethafoam 330
floor and lid parts: PUR RG22, dimple-finish, profile 1:2, fine
Dimensions: frame: thickness 10 mm/height 140 mm
floor and lid parts: 260 x 140 x 40 mm
Equipment: rear coated with self-adhesive film
Colour: anthracite

Service Box insert set (Laptop)

to fit
POOLBOX 21A, Order no. 39-2043-120-200



Order no.: 89-6-0051
Design: welded frame, parts for floor and lid
Material: frame: PE Ethafoam 220
floor part: PUR RG22, with glued-on stamped component PUR, dimple-finished, profile 1:2, fine, thickness 30 mm, with press cut 270 x 155 mm
lid part: PUR RG22, dimple-finished, profile 1:2, fine
Dimensions: floor part: 335 x 275 x 10/40 mm
lid part: 330 x 235.2 x 30 mm
Equipment: rear coated with self-adhesive film
Colour: anthracite

Order no.: 36-56002
Design: complete set (box and foam)

Dimple-finish insert 40 mm (soft)

to fit
POOLBOX 10 (floor and lid), Order no. 39-1215-120



Order no.: 89-6-0363

(The order no. refers only to 1 foam insert)

Material: PUR RG22, dimple-finish, profile 1:2, fine

Dimensions: 178 x 128 x 40 mm

Equipment: rear coated with self-adhesive film

Colour: anthracite

Dimple-finish insert 40 mm (soft)

to fit
POOLBOX 11 (floor and lid), Order no. 39-2032-120-100
POOLBOX 14 (floor and lid), Order no. 39-2032-170-100



Order no.: 89-6-0339

(The order no. refers only to 1 foam insert)

Material: PUR RG22, dimple-finish, profile 1:2, fine

Dimensions: 280 x 160 x 40 mm

Equipment: rear coated with self-adhesive film

Colour: anthracite

Dimple-finish insert 40 mm (soft)

to fit
POOLBOX 21A (floor and lid), Order no. 39-2043-120-200



Order no.: 89-6-0340

(The order no. refers only to 1 foam insert)

Material: PUR RG22, dimple-finish, profile 1:2, fine

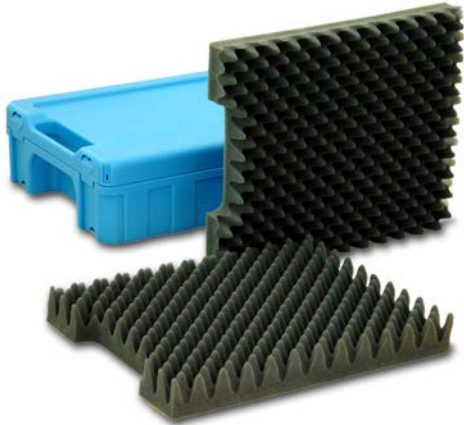
Dimensions: 360 x 290 x 40 mm

Equipment: rear coated with self-adhesive film

Colour: anthracite

Dimple-finish insert 40 mm (soft)

to fit
POOLBOX 21 (floor and lid), Order no. 39-2043-120-100



Order no.: 89-6-0341

(The order no. refers only to 1 foam insert)

Material: PUR RG22, dimple-finish, profile 1:2, fine

Dimensions: 360 x 290 x 40 mm

Equipment: rear coated with 2 self-adhesive strips, 50 mm

Colour: anthracite

Dimple-finish insert 40 mm (soft)

to fit
POOLBOX 33 (floor), Order no. 39-1064-320-100



Order no.: 89-6-0344

Material: PUR RG22, dimple-finish, profile 1:2, fine

Dimensions: 495 x 315 x 40 mm

Colour: anthracite

PE insert 20 mm (hard)

to fit
POOLBOX 33 (floor), Order no. 39-1064-320-100



Order no.: 89-6-0345

Material: PE Ethafoam 220

Dimensions: 517 x 317 x 20 mm

Equipment: rear coated with 2 self-adhesive strips

Colour: anthracite

Dimple-finish insert 50 mm (soft)

to fit
POOLBOX 86 (floor), Order no. 39-1086-600-100



Order no.: 89-6-0346
Material: PUR RG22, dimple-finish, profile 1:2, fine
Dimensions: 680 x 489 x 50 mm
Equipment: rear coated with 2 self-adhesive strips
Colour: anthracite

PE insert 20 mm (hard)

to fit
POOLBOX 86 (floor), Order no. 39-1086-600-100



Order no.: 89-6-0347
Material: PE Ethafoam 220
Dimensions: 680 x 485 x 20 mm
Colour: anthracite

PUR combi-insert 20 mm (soft)

to fit
RAKO and EUROTEC containers 400 x 300 mm



Order no.: 89-6-0361
Material: PUR RG25
Dimensions: 363.8 x 263.8 x 20 mm
Colour: anthracite

PE combi-insert 20 mm (hard)

to fit
RAKO and EUROTEC containers 400 x 300 mm



Order no.: 89-6-0360
Material: PE Ethafoam 220
Dimensions: 363.8 x 263.8 x 20 mm
Colour: anthracite

PUR combi-insert 20 mm (soft)

to fit
RAKO and EUROTEC containers 600 x 400 mm



Order no.: 89-6-0350
Material: PUR RG25
Dimensions: 563.8 x 363.8 x 20 mm
Colour: anthracite

PE combi-insert 20 mm (hard)

to fit
RAKO and EUROTEC containers 600 x 400 mm



Order no.: 89-6-0349
Material: PE Ethafoam 220
Dimensions: 563.8 x 363.8 x 20 mm
Colour: anthracite

PE combi-insert 20 mm (hard)

to fit
RAKO containers 800 x 600 mm



Order no.: 89-6-0362
Material: PE Ethafoam 220
Dimensions: 748 x 548 x 20 mm
Colour: anthracite

Foam insert for lid (soft)

to fit
lid for RAKO and EUROTTEC 400 x 300 mm



Order no.: 89-6-0014
Material: PUR RG25
Dimensions: 355 x 255 x 12 mm
Colour: anthracite

Foam insert for lid (soft)

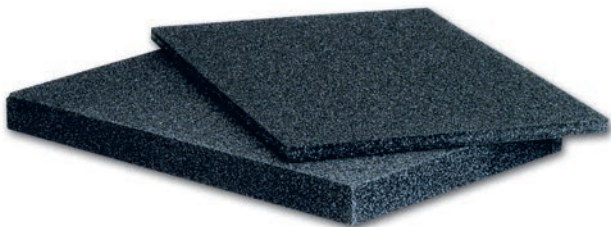
to fit
lid for RAKO and EUROTTEC 600 x 400 mm



Order no.: 89-6-0015
Material: PUR RG25
Dimensions: 555 x 355 x 12 mm
Colour: anthracite

Foam inserts, electrically conductive

to fit
RAKO containers 400 x 300 mm and 600 x 400 mm



Order no.: 89-6-0008
Material: electrically conductive, hard
Dimensions: 350 x 250 x 12 mm

Order no.: 89-6-0008.1
Material: electrically conductive, soft
Dimensions: 350 x 250 x 12 mm

Order no.: 89-6-0004
Material: electrically conductive, hard
Dimensions: 550 x 350 x 6 mm

Order no.: 89-6-0004.1
Material: electrically conductive, soft
Dimensions: 550 x 350 x 6 mm

Order no.: 89-6-0005
Material: electrically conductive, hard
Dimensions: 550 x 350 x 12 mm

Foam insert set (soft)

to fit
RAKO case, Order no. 35-211



Order no.: 80-925-11
Material: PUR RG25 (floor part pre-stamped)
Masse: floor part: 360 x 260 x 62 mm
lid part: 360 x 260 x 12 mm
Colour: anthracite



Foam insert set (soft)

to fit
RAKO case, Order no. 35-203



Order no.: 80-925-12
Material: PUR RG25 (floor part pre-stamped)
Masse: floor part: 360 x 260 x 112 mm
lid part: 360 x 260 x 12 mm
Colour: anthracite

Foam insert set (soft)

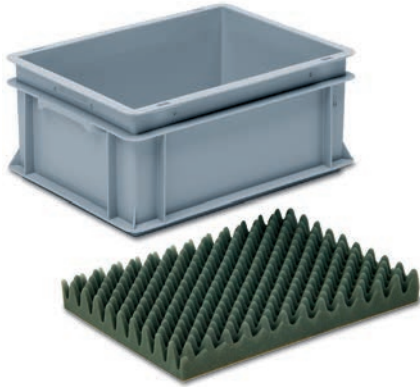
to fit
RAKO case, Order no. 35-200



Order no.: 80-925-24
Material: PUR RG25 (floor part pre-stamped)
Masse: floor part: 560 x 360 x 112 mm
lid part: 560 x 360 x 12 mm
Colour: anthracite

PUR dimple-finish insert 40 mm (soft)

to fit
RAKO containers 400 x 300 mm and POOLBOX 23



Order no.: 89-6-0364
Material: PUR RG22, dimple-finish, profile 1:2, fine
Dimensions: 385 x 258 x 40 mm
Colour: anthracite

PUR dimple-finish insert 40 mm (soft)

to fit
RAKO containers 600 x 400 mm



Order no.: 89-6-0365
Material: PUR RG22, dimple-finish, profile 1:2, fine
Dimensions: 558 x 358 x 40 mm
Colour: anthracite

Foam insert set

to fit
STANDARD large volume container, Order no. 36-801



Order no.: 89-6-0143
Lower insert
Material: PE Ethafoam 220
Dimensions: 710 x 480 x 10 mm
Colour: anthracite

Upper insert
Material: PUR RG22, dimple-finish, profile 1:1, fine
Dimensions: 770 x 540 x 30 mm
Colour: anthracite



Foam inserts can be moulded to individual customer requirements on request; available in quantities as low as 1 unit.



